

# Suction Accessories

## Overflow Safety Traps

Overflow Safety Traps are recommended for use with all Vacuum Regulators. Traps guard against accidental overflow and protect regulators, wall outlets and central pipeline systems from contamination and blockage.

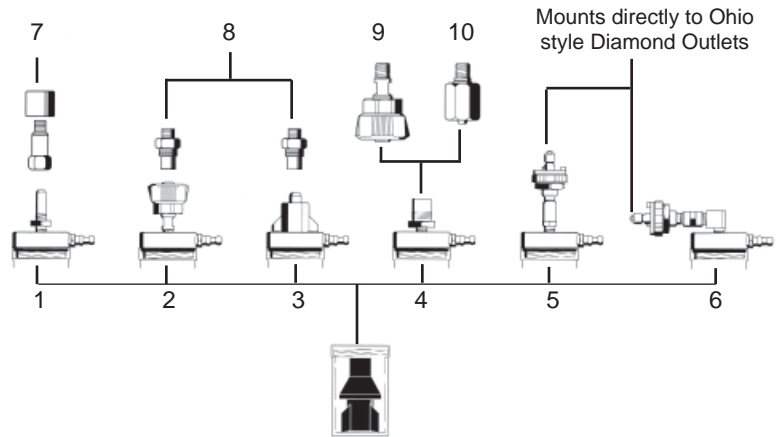
- Meets NFPA and ASTM standards
- Clear, shatter resistant bottle
- Unique float design ensures maximum vacuum flow and positive shutoff
- Easily autoclavable or gas sterilizable
- Latex-free
- MR Conditional
- 1 year warranty



## Trap Mating Parts:

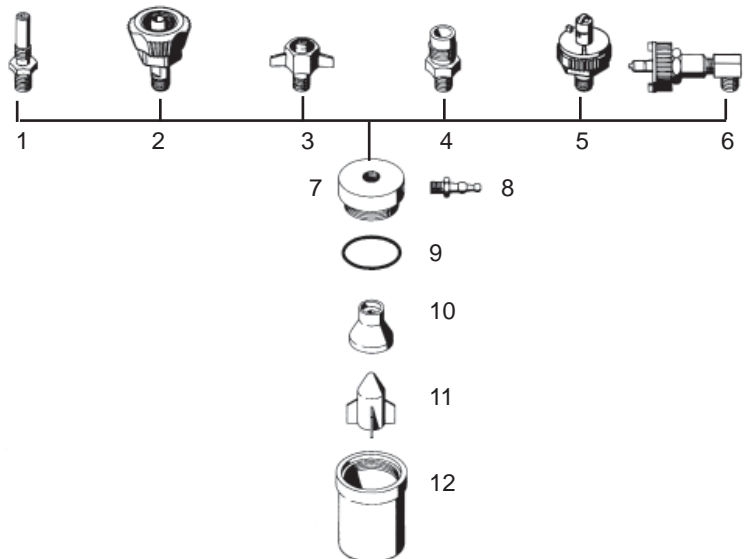
(Top row parts fit bottom of vacuum regulator)\*

- |     |   |               |
|-----|---|---------------|
| 1.  | Locking Gland   | 6700-0365-901 |
| 2.  | Hand-I-Twist (HIT)  | 6702-0365-901 |
| 3.  | DISS Wing Nut & Gland   | 6703-0365-901 |
| 4.  | DISS Male Adapter   | 6714-0365-901 |
| 5.  | Diamond Adapter, Straight   | 6701-0365-901 |
| 6.  | Diamond Adapter, 90°  | 6719-0365-901 |
| 7.  | Locking Gland (1/8" NPT Male to Female Locking Gland, Locking Sleeve) | 6700-0144-700 |
| 8.  | DISS Male   | 6700-0524-802 |
| 9.  | DISS Hand-I-Twist (HIT)   | 6700-0510-802 |
| 10. | DISS Union Nut & Gland  | 6700-0094-700 |



## Fittings and Parts for Overflow Safety Trap\*

- |     |                               |               |
|-----|-------------------------------|---------------|
| 1.  | Locking Gland Male            | 0221-6264-535 |
| 2.  | DISS Hand-I-Twist(HIT)Adapter | 6700-0510-802 |
| 3.  | DISS Gland, Vacuum            | 0204-7979-535 |
|     | DISS Union Wing Nut           | 0204-6601-300 |
| 4.  | DISS Male Adapter             | 6700-0524-802 |
| 5.  | Diamond Adapter               | 6700-0300-802 |
|     | 1/8" NPT Extension            | 0204-0492-535 |
| 6.  | Diamond Adapter               | 6700-0300-802 |
|     | Elbow                         | 0213-4005-335 |
| 7.  | Cap                           | 0221-6315-535 |
| 8.  | Tubing Nipple                 | 0204-9048-535 |
| 9.  | O-Ring                        | 0210-0528-300 |
| 10. | Splash Deflector              | 0221-6317-100 |
| 11. | Float                         | 0221-6316-100 |
| 12. | Lexan® Jar                    | 0212-0463-100 |



\*MR Conditional (see note on page 3)