



Broselow™ System

simplified pediatric emergency care

Broselow Kit

The Broselow™ system is a color-coded system that helps provide quick and accurate medication dosing by utilizing length to categorize pediatric patients using color zones. The system also offers immediate access to crucial pre-sized emergency equipment. It includes seven specific modules, manual resuscitation equipment and a medication dosage guide.

With the Broselow color-coded tape, children can be measured by length and assigned a color zone. Each zone has accurate size-based information about medications, procedure-specific equipment and emergency situations. The system is easy to use and helps reduce delays in pediatric emergencies.

Broselow color-coding design:

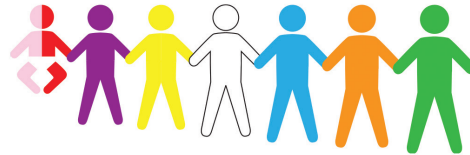
- Helps prevent mathematical and dosing errors during chaotic situations
- Simplifies use of pre-sized emergency equipment

Each Broselow Pediatric Emergency Kit includes:

- Color-coded Broselow emergency tape
- Equipment packs for intubation, intravenous, oxygen and intraosseus procedures
- Hardware:
 - Infant, child and small adult blood pressure cuffs
 - Blood pressure manometer
 - Manual resuscitator
 - 2 laryngoscope handles
 - 1 small and 1 large set of Magill Forceps



The Broselow color-coded emergency tape provides a reusable guide with common drug dosing and emergency equipment.



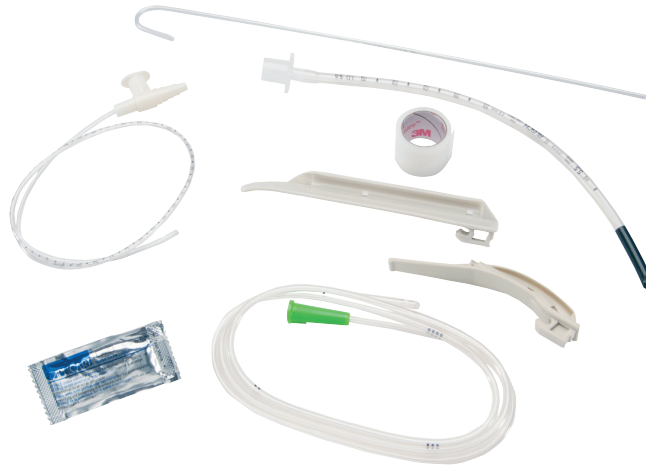
Broselow system



Equipment packs

Intubation module

- Laryngoscope blade(s)
- Endotracheal tube
- Stylet
- Suction catheter
- Nasogastric tube
- Lubricating jelly
- Gauze pad, tape
- 10 cc syringe (orange and green modules only)



Oxygen module

- Berman airway
- Non-rebreathing oxygen mask with tubing



Intravenous module

- IV catheter
- IV extension set
- IV prep kit



Intraosseus module

- Adjustable sternal/Iliac bone marrow aspiration needle
- IV extension set



Modules are sold together in the Broselow bag or are available separately.



Armstrong Medical is the exclusive dealer for Broselow products within the United States.
For sales outside the United States, contact your local representative.



See product labeling and dedicated
product brochure

GLOBAL HEADQUARTERS

Vyairē Medical, Inc.
26125 North Riverwoods Blvd
Mettawa, IL 60045, USA

[vyairē.com](https://www.vyairē.com)

Rx ONLY For U.S., Qatar, Bahrain, Hong Kong, Indonesia, Singapore and United Arab Emirates distribution only.

© 2018 Vyairē. Vyairē, the Vyairē logo and Broselow are trademarks or registered trademarks of Vyairē Medical, Inc., or one of its affiliates. Medical devices class IIa according to Medical Devices Directive 93/42/EC. Please read the complete Instructions For Use that come with the devices or follow the instructions on the product labeling. CF/805/18/0035 (0818)